

# MAPUTI 17,667 MT Tween Deck Cargo Vessel 70

[Contents](#)

[By Builder](#)

[By Ship Type](#)

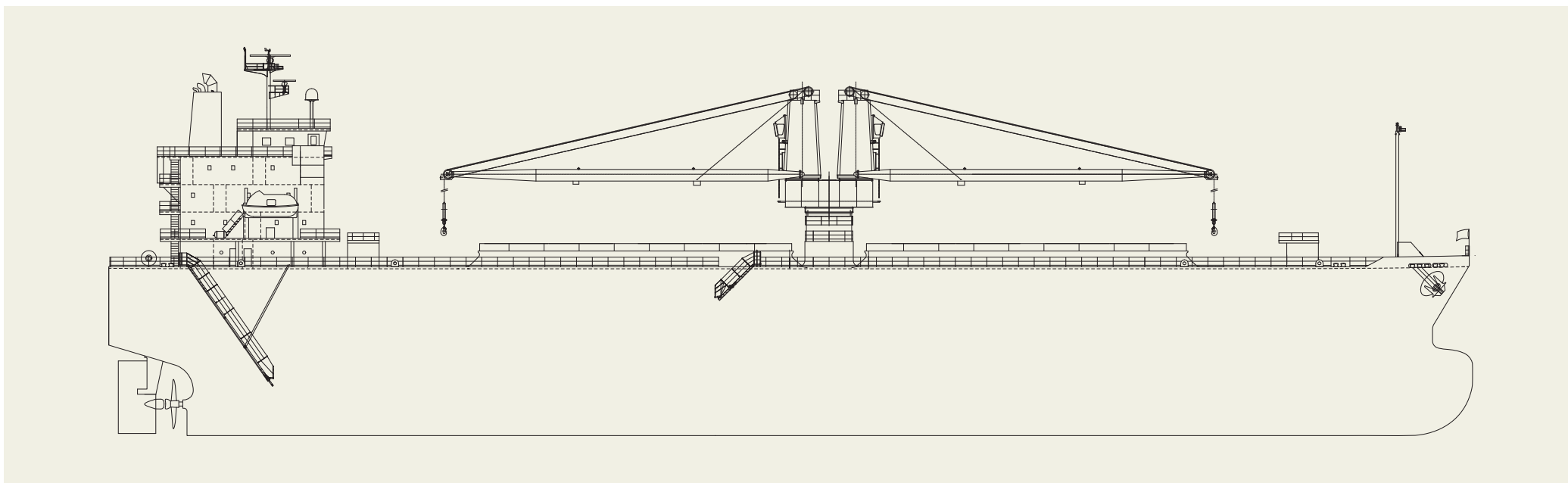


**Features**

1. The vessel has two (2) tween deck cargo holds for carrying various cargoes, and equipped with one (1) set 100 tons capacity twin type electro-hydraulic type deck crane.
2. Cargo hold is designed semi-box shaped type and has 25,400 cubic meter capacity and with 30m length long type wide hatch.
3. She has wide breadth and shallow draft, so it is not only for safe cargo transportation, but also for improvement for crew living environment.
4. In order to be complied with EEDI phase-3 environmental regulation, the ship archives high propulsion performance by combination of optimized hull shape and propeller.

**PRINCIPAL PARTICULARS**

|                         |                                   |                               |   |
|-------------------------|-----------------------------------|-------------------------------|---|
| Length (o.a.) .....     | 129.66 m                          | Complement.....               | 20 persons  |
| Length (b.p.).....      | 122.60 m                          | Classification .....          | NK  |
| Breadth (mld.).....     | 23.60 m                           | Handling gear.....            | 1 set Electro-Hydraulic Type Deck Crane (Twin type) |
| Depth (mld.).....       | 15.85 m                           | Cargo pump.....               | Nil   |
| Draft (mld.).....       | 9.80 m                            | Loading capacity (grain)..... | 25383.3 m <sup>3</sup>                              |
| Gross tonnage.....      | 13,263                            | (bale).....                   | 23842.4 m <sup>3</sup>                              |
| Deadweight.....         | 17,667 MT                         | (container) .....             | N/A   |
| Main engine .....       | J-ENG 6UEC35LSE-B2                | (passenger).....              | N/A   |
| MCR (kw x rpm) .....    | 3,090 kW x 118 min <sup>-1</sup>  | (car/vehicle).....            | N/A   |
| NOR (kw x rpm).....     | 2,625 kW x 111.8min <sup>-1</sup> | (others) .....                | N/A   |
| Speed (max. trial)..... | 14.8 knots                        | Builder.....                  | Onomichi Dockyard Co., Ltd.                         |
| (service).....          | 12.5 knots                        |                               |   |



# KIZUNA 21 8,015 DWT General Cargo Ship 71

[Contents](#)

[By Builder](#)

[By Ship Type](#)



**KIZUNA 21** 8,015 DWT General Cargo Ship **71**

Contents By Builder By Ship Type

One set of hydraulic twin type deck crane is installed on the vessel, which is available for hoisting load 80t on twin use condition.

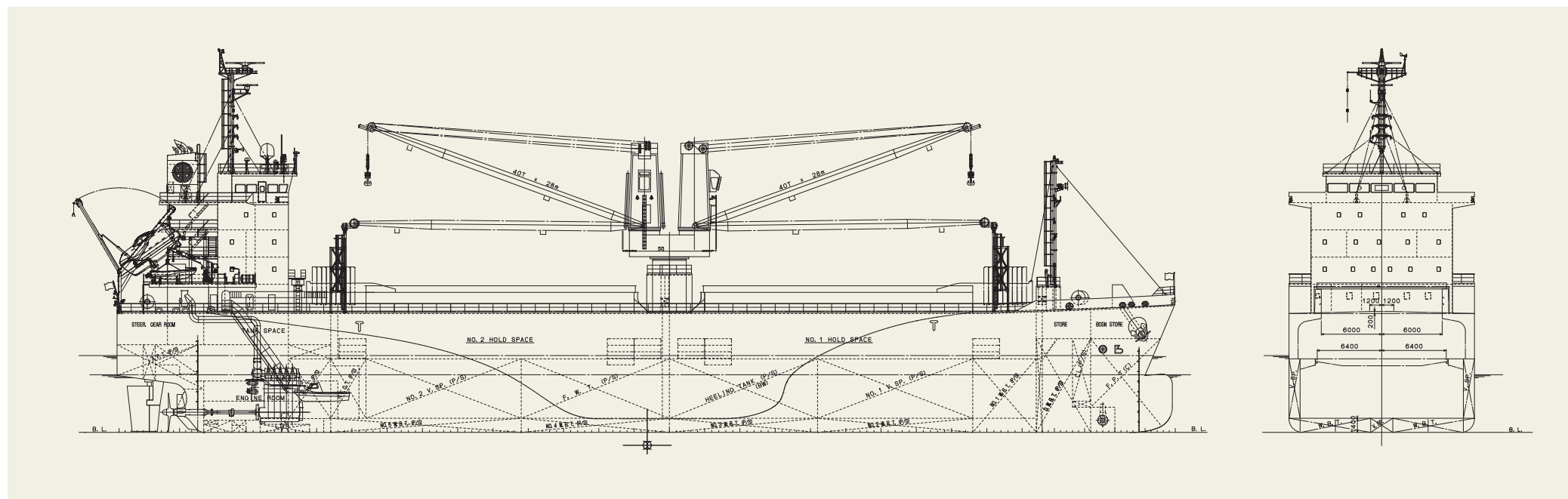
Stern fins are installed on the stern frame to maintain a good water flow to the propeller to improve propulsion efficiency and reduce fuel consumption, which are patented proprietary technology of Sasaki. The vessel also complies EEDI phase III and has achieved to reduce environmental impact.

The ship vibration is suppressed as much as possible for crew comfort by conducting adequate analysis at the initial design stage, as well as low noise and good stability has been achieved.

**PRINCIPAL PARTICULARS**

|                      |                           |
|----------------------|---------------------------|
| Length (o.a.) .....  | 104.97 m                  |
| Length (b.p.) .....  | 98.80 m                   |
| Breadth (mld.) ..... | 18.40 m                   |
| Depth (mld.) .....   | 11.80 m                   |
| Draft (mld.) .....   | 7.62 m                    |
| Gross tonnage .....  | 6,267                     |
| Deadweight .....     | 8,015 tons                |
| Main engine .....    | HITACHI-MAN B&W 5L35MC6.1 |
| MCR (kw × rpm) ..... | 2,750 × 178               |

|                                |   |
|--------------------------------|---|
| NOR (kw x rpm) .....           | 2,475 × 172                                     |
| Speed (max. trial) .....       | 14.32 knots                                     |
| (service) .....                | 13.00 knots                                     |
| Complement .....               | 18 persons                                      |
| Classification .....           | BV  |
| Handling gear .....            |   |
|                                | Hydraulic twin deck crane 80T x 28m / R x 1 set |
| Loading capacity (grain) ..... | 12,866 m <sup>3</sup>                           |
| (bale) .....                   | 11,195 m <sup>3</sup>                           |
| Builder: .....                 | Sasaki Shipbuilding Co., Ltd.                   |



# KYOWA EAGLE 11,917 DWT General Cargo Ship 72

[Contents](#)

[By Builder](#)

[By Ship Type](#)



# KYOWA EAGLE 11,917 DWT General Cargo Ship 72

[Contents](#)
[By Builder](#)
[By Ship Type](#)

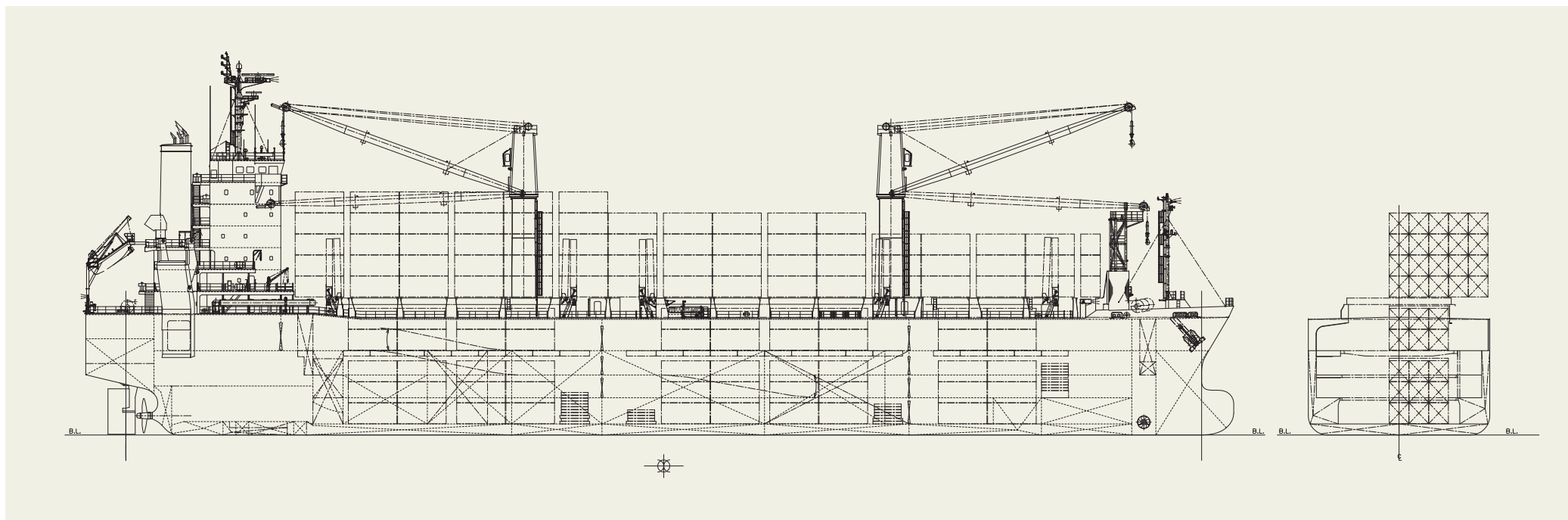
The 11,917 dwt General cargo ship KYOWA EAGLE was built at SHIN KURUSHIMA DOCKYARD CO., LTD. and delivered to Panamanian Owner in December 2022.

## Features

1. The vessel is designed as carrying steel products, plywood, vehicles, containers, general cargo and dangerous cargo not in bulk.
2. Upper deck hatch covers are folding type and 2nd, 3rd and 4th deck hatch covers are pontoon type
3. One (1) set of stern ramp are provided.
4. The vessel has two (2) sets of 40ton electro-hydraulic single deck cranes on the port side of upper deck.

## PRINCIPAL PARTICULARS

|                     |                                     |                               |   |
|---------------------|-------------------------------------|-------------------------------|---|
| Length (o.a.).....  | 143.03 m                            | Speed (service).....          | 14.0 knots                                  |
| Length (b.p.).....  | 134.00 m                            | Complement.....               | 25 P  |
| Breadth (mld.)..... | 22.60 m                             | Classification.....           | NK  |
| Depth (mld.).....   | 14.40 m                             | Handling gear.....            | 40 t x 18.0 m/min x 30 mR x 2 sets          |
| Draft (mld.).....   | 7.85 m                              | Loading capacity (grain)..... | 26,923 m <sup>3</sup>                       |
| Gross tonnage.....  | 12,740                              | (bale).....                   | 23,813m <sup>3</sup>                        |
| Deadweight.....     | 11,917 t                            | (container).....              |   |
| Main engine.....    | MAKITA – MITSUI – MAN B&W 6S35MC7.1 |                               | 355 units of 40 Feet / 782 units of 20 Feet |
| MCR (kW x rpm)..... | 3,630 kW x 147 min                  | (car/vehicle).....            | 554 units                                   |
| NOR (kW x rpm)..... | 3,086 kW x abt. 139 min             | Builder:.....                 | Shin Kurushima Dockyard Co., Ltd.           |



# KANOA 13,551 DWT General Cargo Ship 73

[Contents](#)

[By Builder](#)

[By Ship Type](#)



**KANOA** 13,551 DWT General Cargo Ship 73

Contents By Builder By Ship Type

The 13,551-dwt general cargo ship KANOA was built at SHIN KURUSHIMA DOCKYARD CO., LTD. and delivered to a Philippines Owner in June 2023.

**Features**

1. The vessel has twin-deck cargo holds and the cargo holds are designed as suitable for carrying long-size cargoes.
2. Upper deck hatch covers are single pull type for No.1 hatch and No.2 hatch. Second deck hatch covers are pontoon type.
3. The vessel has 1 set of 72-ton electro-hydraulic twin deck cranes on the upper deck.
4. The ship can carry coal, grain(overstowing), chip, steel coil, steel products, dangerous cargoes and general cargoes.

**PRINCIPAL PARTICULARS**

|                     |                                     |                                     |  |
|---------------------|-------------------------------------|-------------------------------------|--|
| Length (o.a.) ..... | 119.93 m                            | MCR (kW x min <sup>-1</sup> ) ..... | 3,030 kW x 147min <sup>-1</sup>        |
| Length (b.p.).....  | 114.00 m                            | NOR (kW x min <sup>-1</sup> ).....  | 2,576 kW x about 139 min <sup>-1</sup> |
| Breadth (mld.)..... | 21.20 m                             | Speed (service).....                | 12.0 knots                             |
| Depth (mld.).....   | 14.05 m                             | Complement.....                     | 21 P                                   |
| Draft (mld.).....   | 9.15 m                              | Classification .....                | NK                                     |
| Gross tonnage.....  | 9,943                               | Loading capacity (grain) .....      | 19,550 m <sup>3</sup>                  |
| Deadweight.....     | 13,551 t                            | (bale).....                         | 18,848 m <sup>3</sup>                  |
| Main engine .....   | MAKITA - MITSUI - MAN B&W 6S35MC7.1 | Builder: .....                      | Shin Kurushima Dockyard Co., Ltd.      |

